

**SETTING UP
REMOTE DESKTOP
ON iPad and iPhone**

(Updated: 16 January 2012)

TABLE OF CONTENTS

BDP VTS1 FOR IPAD AND IPHONE	1
RUNNING "WYSE"	2
LOGGING ON TO BDP VTS1	3

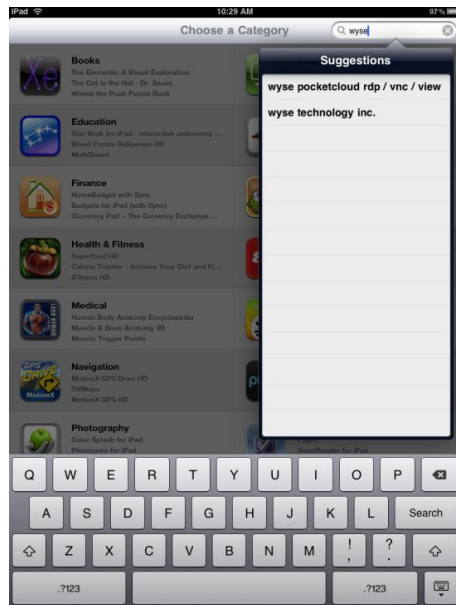
BDP VTS1 FOR IPAD AND IPHONE

In order to access your Remote Desktop from your iPad and iPhone devices, do the following steps:

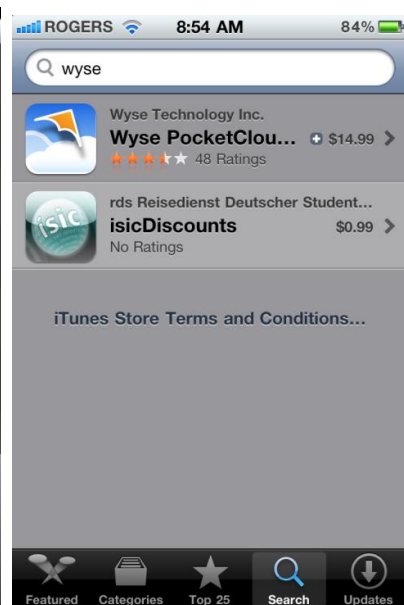
- (a) The recommended program for iPad and iPhone is called **"Wyse"** (Current version is 2.0.7). If you have already installed or updated this application, skip to Page 2 (Running "Wyse")
- (b) Installing **"Wyse"**



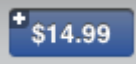
- (i) Open the **"App Store"**
- (ii) Search for **"Wyse"** and select **"Wyse PocketCloud.rdp / vnc / view"**. The following is an illustration of this for both iPad and iPhone:



iPad



iPhone

- (c) Install the appropriate application by clicking on  and selecting

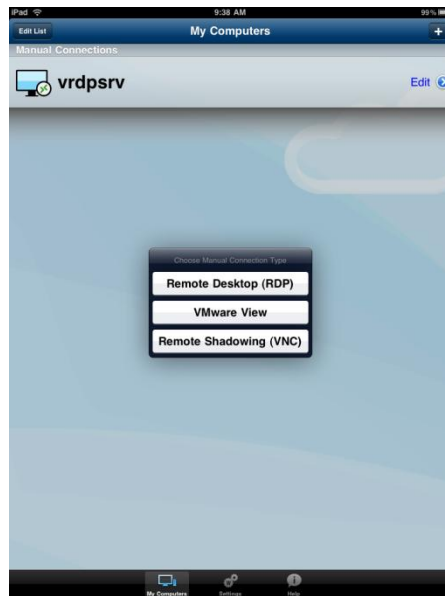


RUNNING "WYSE"

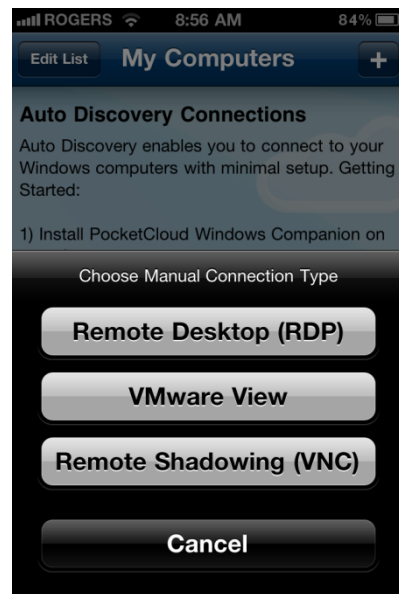
- (a) After purchasing the application, do the following:



- (i) Run "Wyse" from the main screen
- (ii) Click on the **+** symbol and select "**Remote Desktop (RDP)**". The following is an illustration for both iPad and iPhone:



iPad



iPhone

Click on "**Remote Desktop (RDP)**" for either device as illustrated above. The following page illustrates the result of this action:

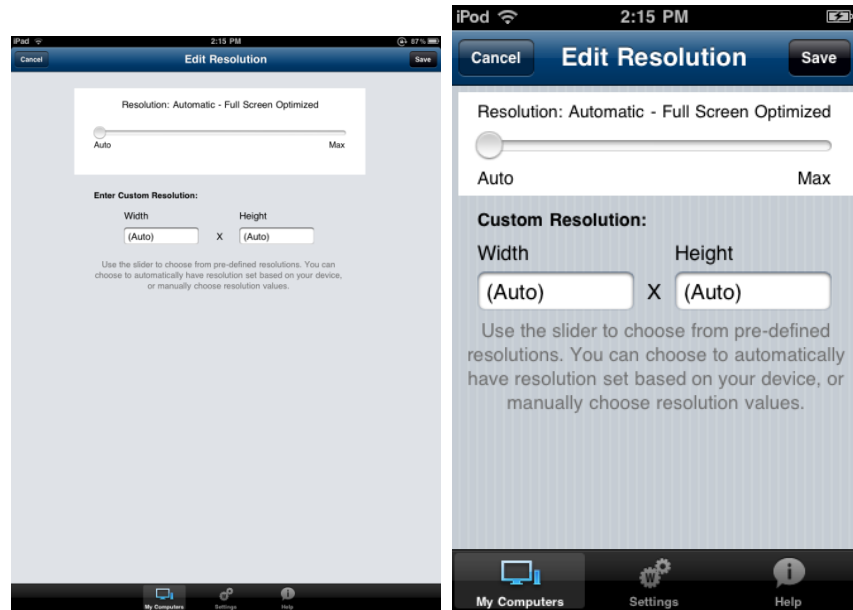
(iii) Set the following settings by clicking on "Save" through each step:

(A) Nickname: **BDP vTS1**

(B) Host: **vt.bdplaw.net (newer technology)**

(If you are referencing 139.142.154.69, please change to vt.bddplaw.net)

(C) Resolution: **Auto**



iPad

iPhone

(iv) Click on "Save" on the "New Computer" screen and select "BDP vTS1".

NOTE: If you have an existing icon on your desktop with same name (BDP vTS1), you will be prompted to replace existing. Replace the existing icon.

LOGGING ON TO BDP VTS1

Please refer to "BDP Remote Access Systems" on "Help & Support" on the Intranet or visit www.bdplaw.net